



## **NB5PLUS4W Quick Start Guide for Mac**

---

### **Start Here**

This Quick Start provides basic instructions for connecting your NB5PLUS4W to an Apple Macintosh computer and to the Internet.

1. USB Installation.
2. Ethernet Installation
3. Airport Installation
4. Modem Set-up

Before you can use this Quick Start Guide, you must have already established an ADSL service with your Internet Service Provider (ISP).

These instructions provide a basic set-up configuration that should get home or small office Macs up and running. This will be sufficient for most users.

If you need to perform more advanced configurations, please see the comprehensive User Guide on the supplied CD-ROM for additional instructions.

**NOTE:** NetComm Technical Support for this product only covers the essential installation and features outlined in this Quick Start Guide. For detailed information regarding the advanced features of this product, please see the configuring sections in the NB5PLUS4W User Guide on the supplied CD-ROM.

### ***Connecting your NB5PLUS4W***

The NetComm NB5PLUS4W Modem can be connected directly to your Mac via an Ethernet or USB interface. In addition, you can use your Mac's Airport to connect to the NB5PLUS4W wirelessly.

**Warning:** Before you begin, turn the power off for all devices. These include your Mac and your NB5PLUS4W Modem.

### ***Do I need to use the MicroFilter?***

MicroFilters prevent common telephone equipment – such as telephones, answering machines and fax machines – from interfering with your ADSL service.

If you are using a telephone, fax machine, answering machine or any other equipment (other than your NB5PLUS4W Modem) on your ADSL-enabled phone line, you will need to use one Micro filter for each phone device.

Splitters are sometimes installed when your ADSL service is installed. If your telephone line is split you will not need to use a MicroFilter. Please check with your ADSL service provider if you are unsure.

Each MicroFilter is connected in-line with your telephone or fax machine so that all signals for these devices pass through the MicroFilter. Refer to the comprehensive User Guide supplied on the CD-ROM for more information.

## USB INSTALLATION

**Important Note:** To connect your NB5+4 to your Mac via USB, you will need to install a special utility that creates a new virtual Ethernet port on your Mac. This process shows you how to do this.

### Step 1 – Install the Hardware

To connect your modem using the USB cable, follow these step-by-step instructions:

1. Connect the ADSL cable.

Connect one end of the telephone cable provided to the port labelled ADSL on the rear panel of your NB5PLUS4W. Connect the other end to your wall phone jack.

2. Connect the USB cable.

Connect one end of the USB cable provided to a USB port on your Mac and the other end of the cable to the USB port of your NB5PLUS4W.

3. Attach the power connector.

Connect the AC power adapter to the Power connector on the back of the NB5PLUS4W and plug in the adapter into a wall outlet or power strip.

4. Switch on the power. Your NB5PLUS4W will start up. Turn on your Mac.

### Step 2 – Set up your Mac

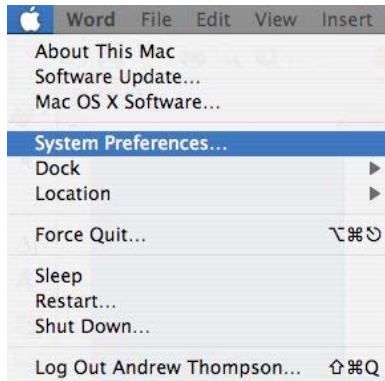
This is how to configure your Mac to work with your NB5PLUS4W Modem using USB.

#### **Mac OS X (10.2 to 10.4)**

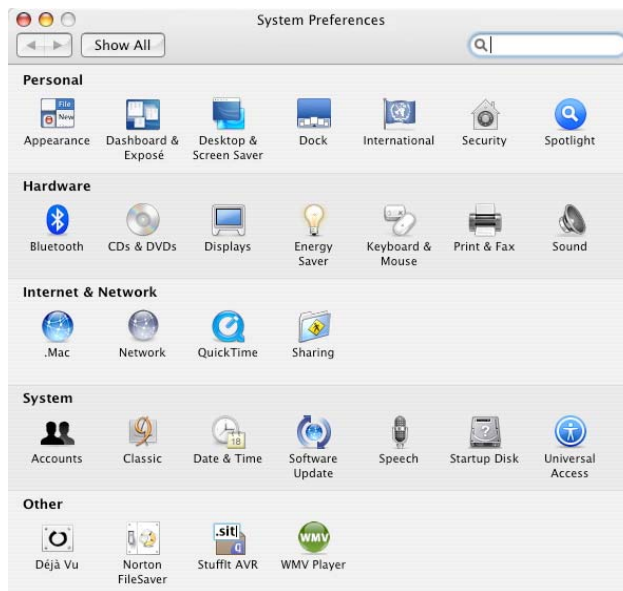
**Please note that you cannot use USB with versions of the Mac OS prior to 10.2. If you wish to use a Mac OS prior to 10.2, you will have to connect your Mac to the NB5PLUS4W via Ethernet.**

1. Locate and double-click the file NB5+4/W USB Installer.pkg. This will launch an Installer called “USBCDCEthernetv1\_2 Installer”.
2. Click “Continue”.
3. If you are offered a choice of hard drives upon which to install the software, choose your start-up drive. Otherwise, choose the only drive offered. Click “Continue”.
4. Click “Install” or “Upgrade”.
5. If you are asked to enter an Administrator’s User Name and Password, please do so. If you do not have the Administrator’s User Name and Password, you must contact the person who does have them. If you cannot do this, you will not be able to install the software.

6. When the Installation has finished, you will be asked to Restart your Mac. Please do so.
7. When your Mac has restarted, go to the Apple menu and select System Preferences.



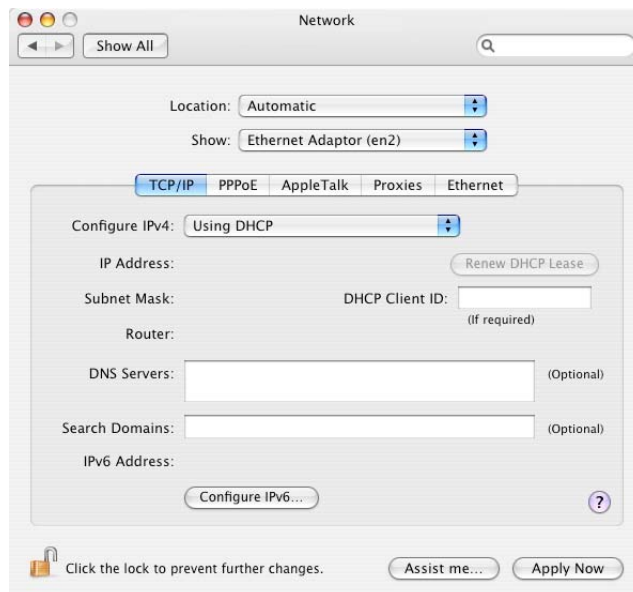
8. The Systems Preferences window opens.



9. In the Systems Preferences window, locate the “Internet and Network” heading and click once on the Network icon. A dialogue box will display, confirming that your driver installation was successful and that the new virtual Ethernet port has been created correctly.



10. Click OK.
11. The Network window opens.

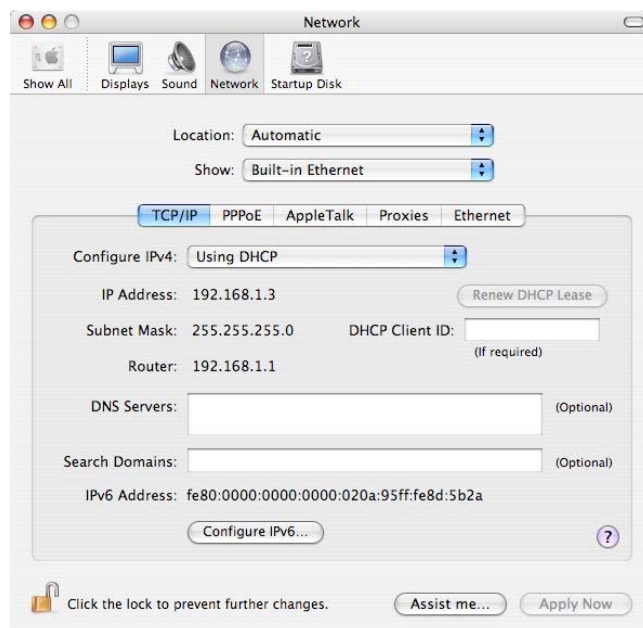


12. If you want to use this Mac in more than place (perhaps at home as well as at your workplace) or on more than one network, you can achieve this easily by setting up a Location for each place or network. Swapping Locations then becomes a simple matter of selecting the appropriate Location. If you wish to do this, you will need to click on the “Location” pop-up menu and select “New Location...”. You will be asked to name your new location.

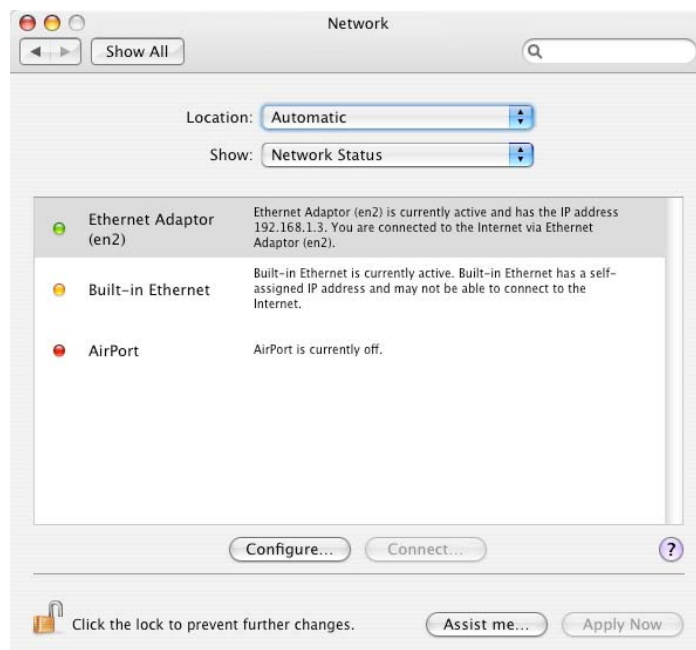


13. Give your New Location a meaningful name and click OK. Make sure that the Location you have just created is displayed in the Location pop-up menu,
14. If you do not wish to set up more than one Location, make sure that the Location pop-up menu is set to “Automatic”.
15. Click on the “Show” pop-up menu and select “Ethernet Adaptor (en2)”. Click on the TCP/ IP tab. The TCP/IP settings will be displayed. Click on the “Configure” pop-up menu (“Configure iPV4” if you’re using Mac OS 10.3) and select “Using DHCP”. Click on Apply Now to save the changes.

Your dialog box should now look like this:



16. If your Mac does not accept an IP address from the DHCP server in your NB5PLUS4W and the IP address field remains blank, try selecting “Using DHCP with manual address” from the “Configure” pop-up menu (“Configure iIPv4” if you’re using Mac OS 10.3) and entering 192.168.1.3 in the “IP address” field.
17. Click on the “Show” pop-up menu and select “Network Status”. Check to see that the bullet alongside “Ethernet Adaptor (en2)” is green.



18. Close the Network window by clicking the red close button (System 10.3) or select “Quit System Preferences” under the “System Preferences” menu (System 10.2 or earlier).

## ETHERNET INSTALLATION

### Step 1 – Install the Hardware

To connect your modem using the Ethernet cable, follow these step-by-step instructions:

5. Connect the ADSL cable.

Connect one end of the telephone cable provided to the port labelled ADSL on the rear panel of your NB5PLUS4W Modem. Connect the other end to your wall phone jack.

6. Connect the Ethernet cable.

Connect one end of the Ethernet cable provided to the Ethernet port on your Mac and the other end of the cable to the Ethernet port of your NB5PLUS4W ADSL Modem.

7. Attach the power connector.

Connect the AC power adapter to the Power connector on the back of the NB5PLUS4W and plug in the adapter into a wall outlet or power strip.

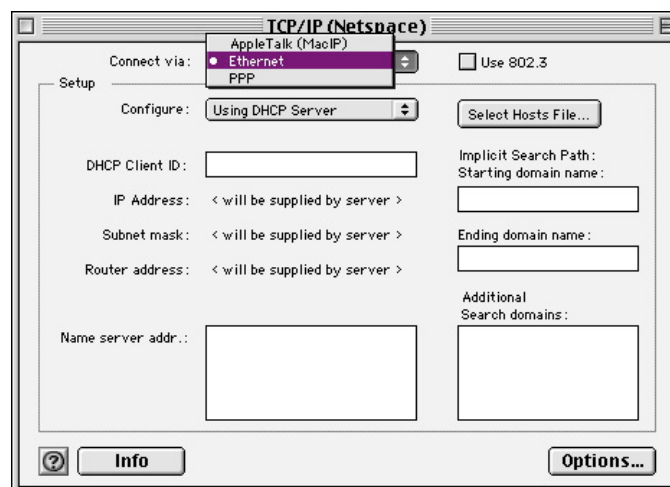
8. Switch on the power. Your NB5PLUS4W will start up. Turn on your Mac.

### Step 2 – Set up your Mac

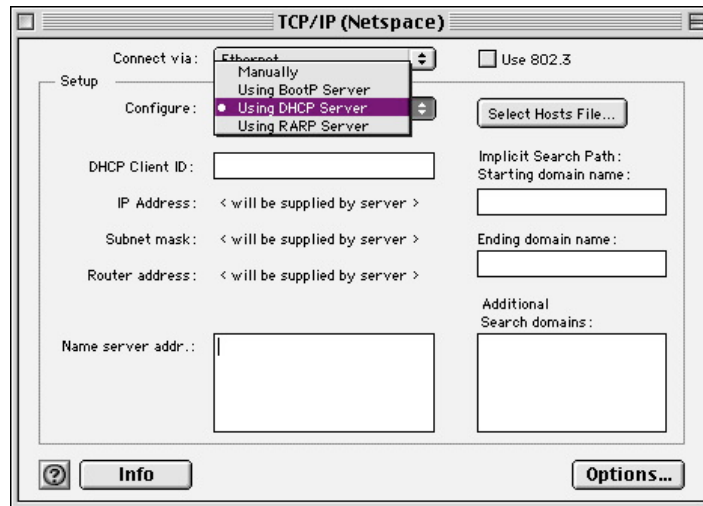
This is how to configure your Mac to work with your NB5PLUS4W ADSL Modem.

#### **Mac OS 9.**

1. From the Apple Menu, select Control Panels, and then select TCP/IP from the secondary menu.
2. From the “Connect via” pop-down menu, select “Ethernet”.



3. From the “Configure” pop-up menu, select “Using DHCP Server”.

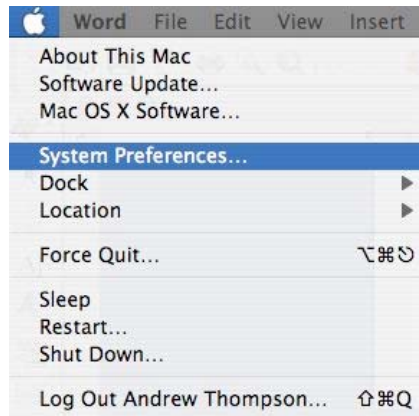


4. Click the close box to close the TCP/IP configuration box. When asked if you wish to save the changes, click YES.



## Mac OS X (10.3 Panther & 10.4 Tiger)

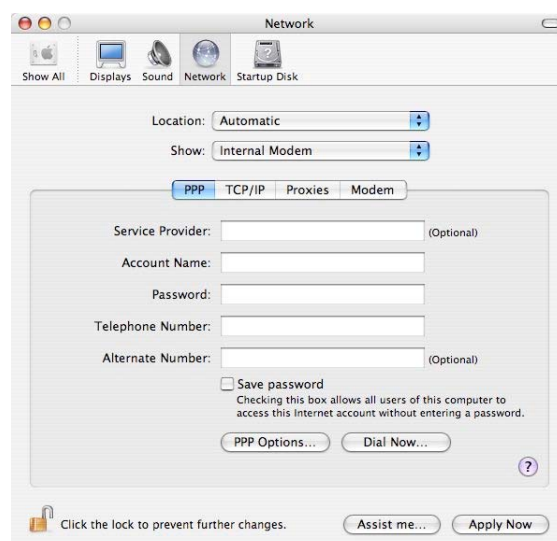
1. From the Apple menu, select System Preferences.



2. The Systems Preferences window opens.



3. In the Systems Preferences window, locate the “Internet and Network” heading and click once on the Network icon. The Network window opens.

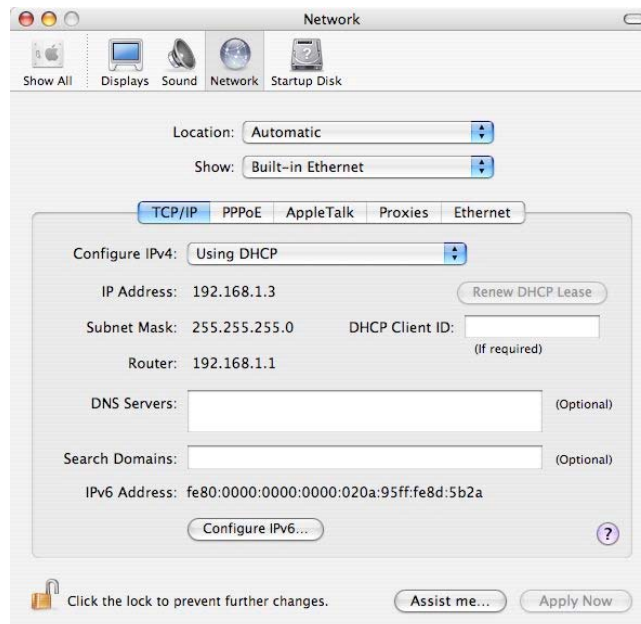


4. If you want to use this Mac in more than place (perhaps at home as well as at your workplace) or on more than one network, you can achieve this easily by setting up a Location for each place or network. Swapping Locations then becomes a simple matter of selecting the appropriate Location. If you wish to do this, you will need to click on the “Location” pop-up menu and select “New Location...”. You will be asked to name your new location.



5. Give your New Location a meaningful name and click OK. Make sure that the Location you have just created is displayed in the Location pop-up menu.
6. If you do not wish to set up more than one Location, make sure that the Location pop-up menu is set to “Automatic”.
7. Click on the “Show” pop-up menu and select “Built in Ethernet”. Click on the TCP/ IP tab. The TCP/IP settings will be displayed. Click on the “Configure” pop-up menu (“Configure iPV4” if you’re using Mac OS 10.3) and select “Using DHCP”. Click on Apply Now to save the changes.

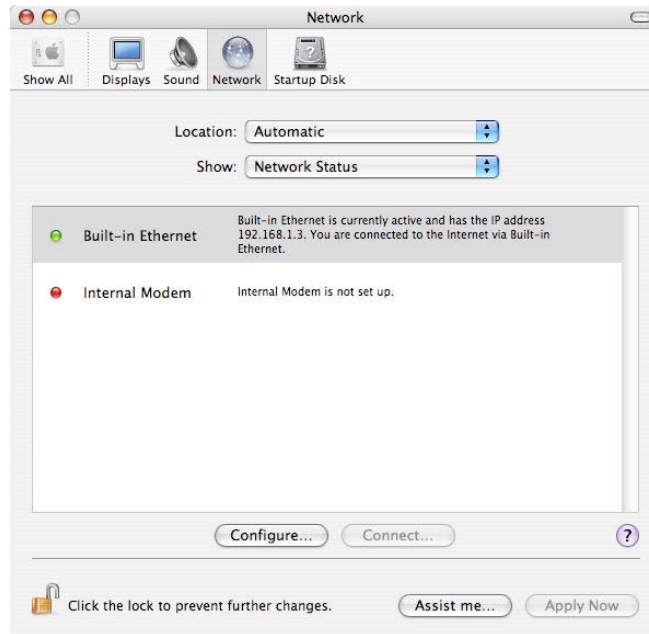
Your dialog box should now look like this:



8. If your Mac does not accept an IP address from the DHCP server in your NB5PLUS4W and the IP address field remains blank, try selecting “Using DHCP with manual address” from the “Configure” pop-up menu (“Configure iPV4” if you’re using Mac OS 10.3) and entering

192.168.1.3 in the “IP address” field.

9. Click on the “Show” pop-up menu and select “Network Status”. Check to see that the bullet alongside “Built-in Ethernet” is green.



10. Close the Network window by clicking the red close button (System 10.3) or select “Quit System Preferences” under the “System Preferences” menu (System 10.2 or earlier).

## AIRPORT INSTALLATION

### Step 1 – Install the Hardware

To connect your modem using Airport, follow these step-by-step instructions:

1. Install your Airport or Airport Extreme card.

If your Airport is not already installed, follow the instructions in the User Guide that came with your Mac to install an Airport or Airport Extreme card.

2. Connect the ADSL cable.

Connect one end of the telephone cable provided to the port labelled ADSL on the rear panel of your NB5PLUS4W Modem. Connect the other end to your wall phone jack.

3. Attach the power connector.

Connect the AC power adapter to the Power connector on the back of the NB5PLUS4W and plug in the adapter into a wall outlet or power strip.

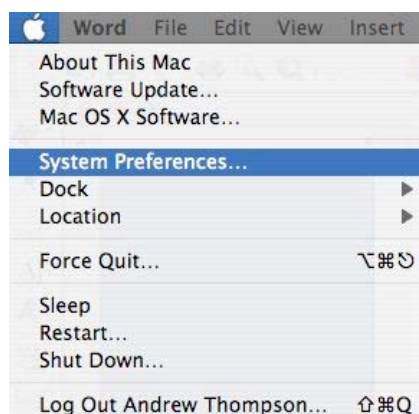
4. Switch on the power. Your NB5PLUS4W will start up. Turn on your Mac.

### Step 2 – Set up your Mac

This is how to configure your Mac to work with your NB5PLUS4W ADSL Modem.

**Please note that, while it may be possible to connect wirelessly to the NB5PLUS4W using Mac OS 9.x, only Mac OS X is supported.**

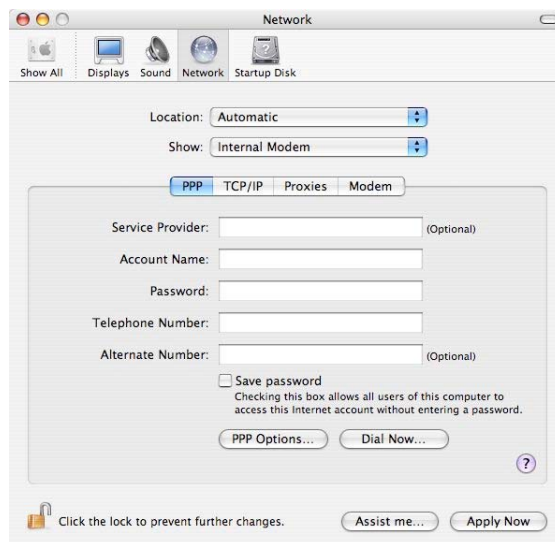
1. From the Apple menu, select System Preferences.



2. The Systems Preferences window opens.



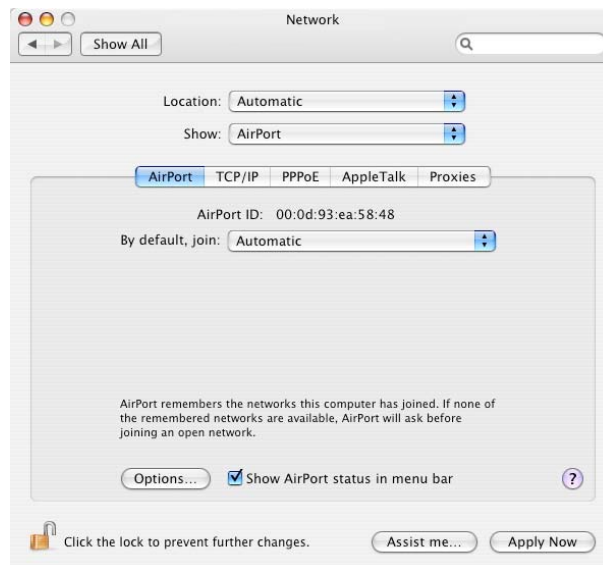
3. In the Systems Preferences window, locate the “Internet and Network” heading and click once on the Network icon. The Network window opens.



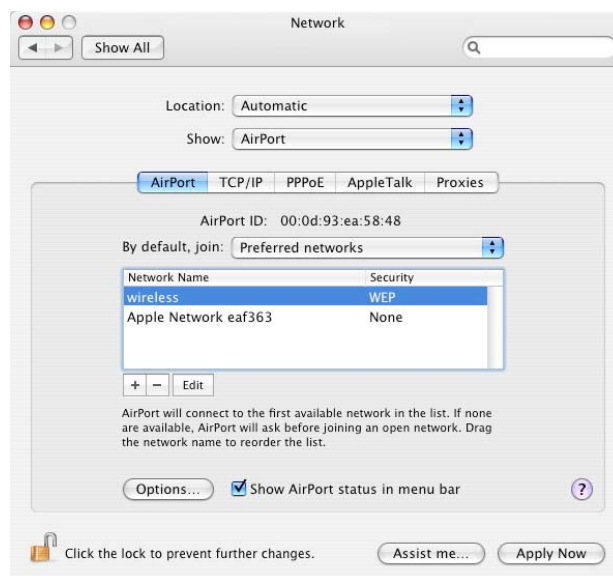
4. If you want to use this Mac in more than place (perhaps at home as well as at your workplace) or on more than one network, you can achieve this easily by setting up a Location for each place or network. Swapping Locations then becomes a simple matter of selecting the appropriate Location. If you wish to do this, you will need to click on the “Location” pop-up menu and select “New Location...”. You will be asked to name your new location.



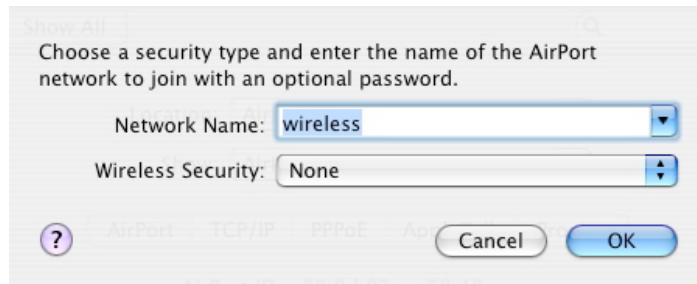
5. Give your New Location a meaningful name and click OK. Make sure that the Location you have just created is displayed in the Location pop-up menu.
6. If you do not wish to set up more than one Location, make sure that the Location pop-up menu is set to “Automatic”.
7. Click on the “Show” pop-up menu and select “AirPort”. Click on the “AirPort” tab.



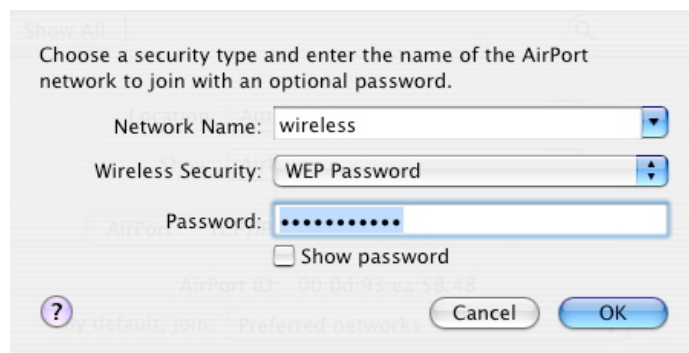
8. Click the pop-up menu “By default, join” and select “Preferred networks”. Select “wireless” from the list that is displayed.



9. With “wireless” selected, click on the “Edit” button at the foot of the list. The following dialogue box is displayed.

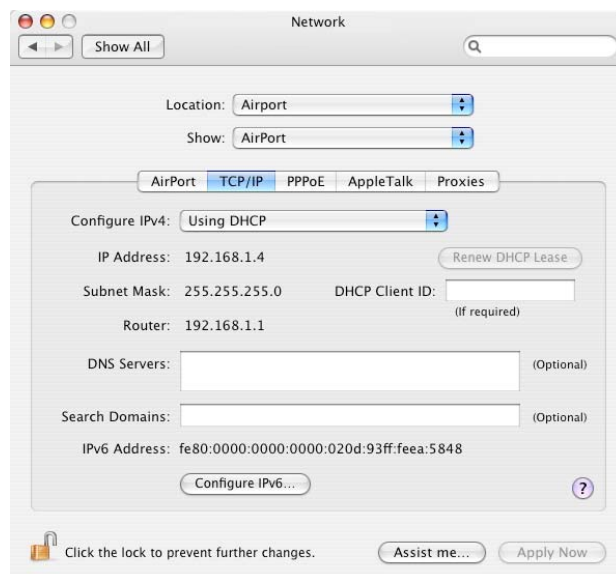


10. Using the “Wireless Security” pop-up menu, select “WEP Security”, In the dialogue box, enter the WEP password that appears on the sticker underneath your NB5PLUS4W.

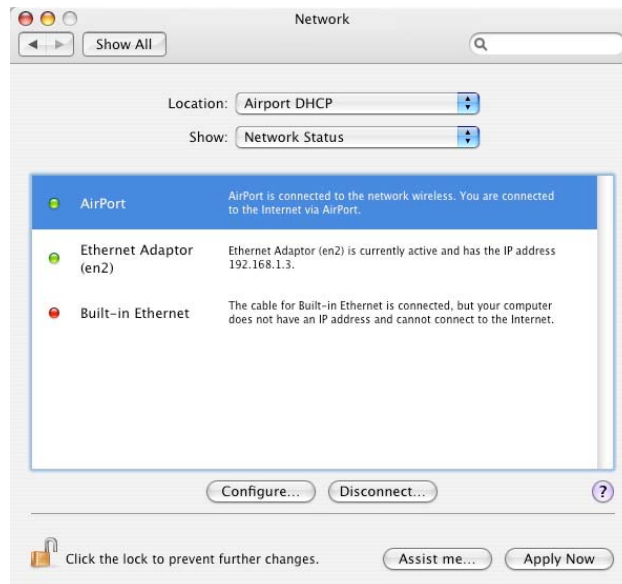


11. Click OK.
12. Click on the TCP/ IP tab. The TCP/IP settings will be displayed. Click on the “Configure IPv4” pop-up menu and select “Using DHCP”. Click on Apply Now to save the changes.

Your dialog box should now look like this:



13. If your Mac does not accept an IP address from the DHCP server in your NB5PLUS4W and the IP address field remains blank, try selecting “Using DHCP with manual address” from the “Configure IPv4” pop-up menu and entering 192.168.1.3 in the “IP address” field.
14. Click on the “Show” pop-up menu and select “Network Status”. Check to see that the bullet alongside “Airport” is green.



15. Close the Network window by clicking the red close button (System 10.3 and 10.4) or select “Quit System Preferences” under the “System Preferences” menu (System 10.2).



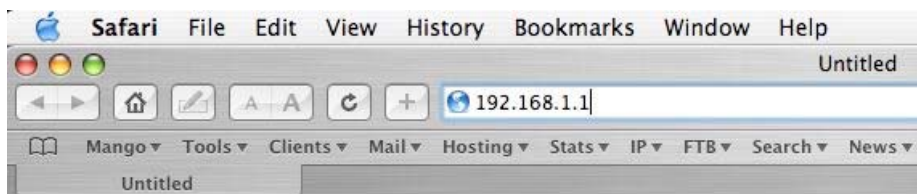
## MODEM SET-UP

You will now log directly into the configuration page of your ADSL Modem and configure basic settings for your Internet connection. Your ISP should provide you with the necessary information to complete this step.

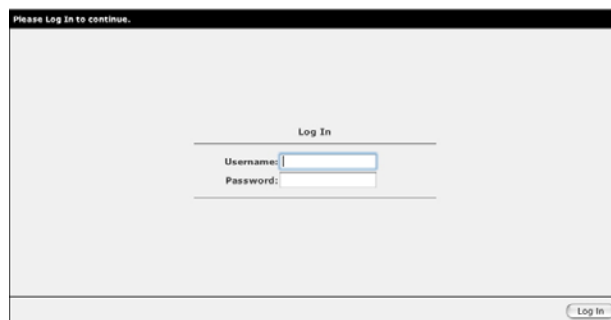
To make it as easy as possible for you, there is a single Quick Configuration page for the settings that you most likely need to change before using your ADSL Modem.

To configure your NB5PLUS4W ADSL Modem, follow the steps below:

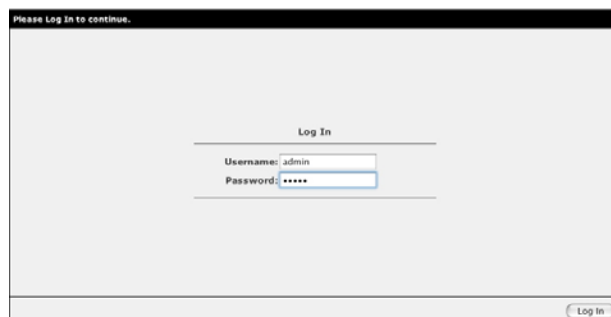
1. Open a web browser such as Safari or Internet Explorer.
2. In the Location Bar, type 192.168.1.1 and press Enter.



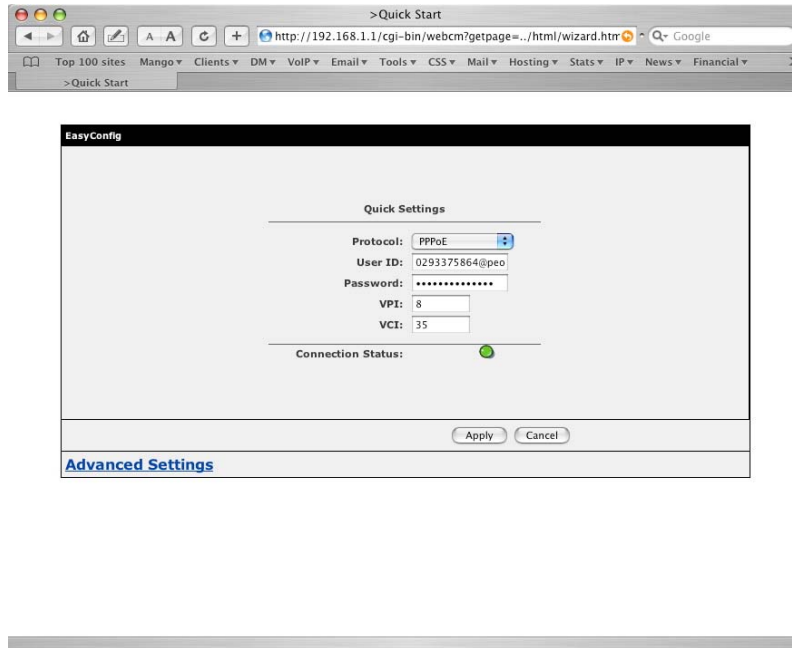
3. Your browser will locate your ADSL Modem and the modem's logon page will be displayed.



4. Enter the username and password. The default username is admin. The default password is admin. Click on OK.



5. The Quick Settings will be displayed.



6. Make sure that PPPoE is selected, enter the username and password that your ISP has provided and click on Apply.
7. You will see a message “Settings Updated Successfully!” and the Quick Settings page will again be displayed. After a few seconds, the Connection Status should show green. If this does not occur, please check that you have entered your User Name and Password exactly as your ISP has specified.
8. You have now completed the set-up which will be sufficient for most uses. You should now be able to access the Internet by selecting one of your Favourites or Bookmarks or by entering a URL in the Location Bar.
9. You may need to change the settings in Mail, Outlook Express or whatever email application you use. Your ISP will supply these settings.
10. If you need to perform more advanced configurations, please see the comprehensive User Guide on the supplied CD-ROM for additional instructions.